

Hematology

Digital Morphology of Blood cells

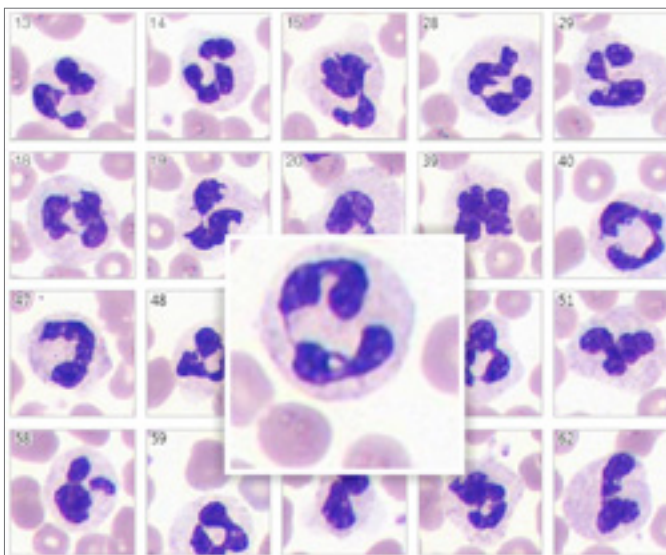


Clinical Application Module

Vision Hema

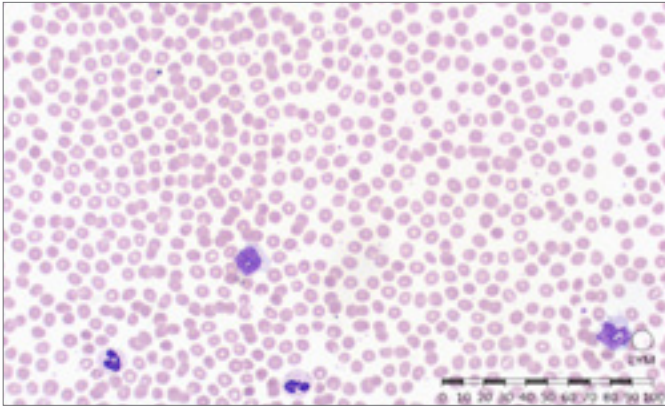
The screenshot displays the Vision Hema software interface. At the top, there are navigation icons for Folder, Patient, Sample, Scanner, Blood Analyzer, Report, Barcode, Panels, Samples Filter, Refresh, and Completed. Below this is a 'Main' window with a 'Samples' list on the left, a 'Results' table in the center, and a 'Cells' grid on the right. A large, detailed image of a segmented neutrophil is overlaid on the grid.

ID	Status	Sam	Last Change Di	Cell Type	Count	%
3052	Scanned	CBC	24.06.2019 16:48	Leukocytes	98	100
3051	Scanned	CBC	24.06.2019 16:47	Eosinophils	-	-
3050	Scanned	CBC	24.06.2019 16:47	Eosinophils	-	-
3058	Scanned	CBC	24.06.2019 16:43	Promyelocytes	-	-
3058	Scanned	CBC	24.06.2019 16:44	Myelocytes	-	-
3057	Scanned	CBC	24.06.2019 16:43	Metamyelocytes	-	-
3056	Scanned	CBC	24.06.2019 16:43	Band neutrophils	-	-
3055	Scanned	CBC	24.06.2019 16:44	Segmented neutrophils	83	84,7
3054	Scanned	CBC	24.06.2019 16:42	Lymphocytes	9	9,2
3053	Scanned	CBC	24.06.2019 16:41	Monocytes	6	6,1
3052	Scanned	CBC	24.06.2019 16:40	Plasma cells	-	-
3051	Scanned	CBC	24.06.2019 16:40	Reactive lymphocytes	-	-
3050	Scanned	CBC	24.06.2019 16:39	Large granular lymphocytes	-	-
3049	Scanned	CBC	24.06.2019 16:38	Prolymphocytes	-	-
3048	Scanned	CBC	24.06.2019 16:37	Atypical lymphocytes	-	-
3047	Scanned	CBC	24.06.2019 16:43	Blasts	-	-
3046	Scanned	CBC	24.06.2019 16:34	Secary cells	-	-
3045	Scanned	CBC	24.06.2019 16:35	Hairy cells	-	-
3044	Scanned	CBC	24.06.2019 16:34	Unknown	-	-
3043	Scanned	CBC	24.06.2019 16:34	Non-WBC	-	-
3042	Scanned	CBC	24.06.2019 16:35	Artifacts	3	3,1
3041	Scanned	CBC	24.06.2019 16:33	Smudge cells	4	4,1
3040	Scanned	CBC	24.06.2019 16:32	Erythroblasts (NRBC)	-	-
3039	Scanned	CBC	24.06.2019 16:31	Giant platelets	-	-
3038	Scanned	CBC	24.06.2019 16:32	Platelets aggregations	-	-
3037	Scanned	CBC	24.06.2019 16:30	Megakaryocytes	-	-
1036	Scanned	rbc	24.06.2019 16:34			
Total:				4074		



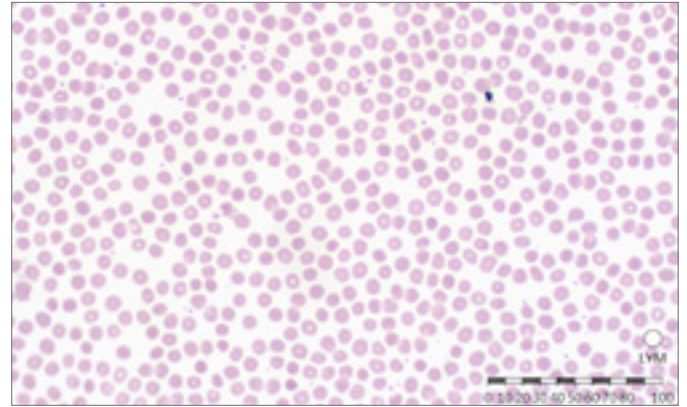
Identification and pre-classification of leucocytes

- Basophils
- Eosinophils
- Promyelocytes
- Myelocytes
- Metamyelocytes
- Band neutrophils
- Segmented neutrophils
- Lymphocytes
- Monocytes
- Reactive lymphocytes
- Blasts
- Erythroblasts



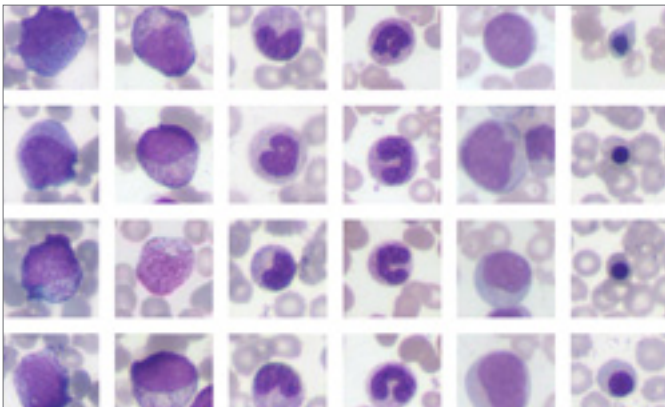
Analysis of erythrocytes

- Size
- Color
- Shape
- Inclusions



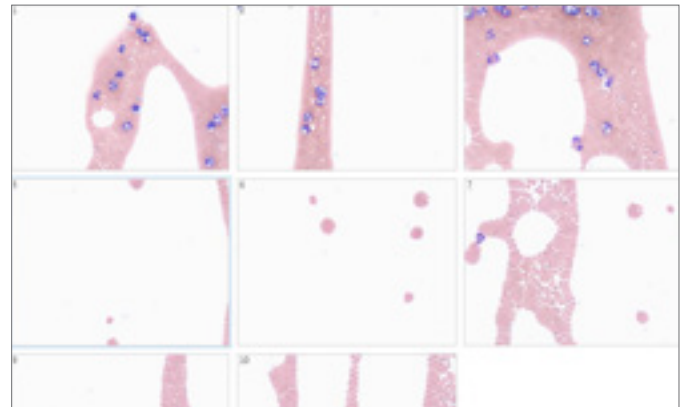
Analysis of platelets

- Normal
- Micro
- Macro



Analysis of pathological and complex cells

- Cells with degenerative changes
- Immature forms of neutrophils
- Atypical forms of lymphocytes
- Blasts
- Erythroblasts, smudge cells and other non-WBC cells

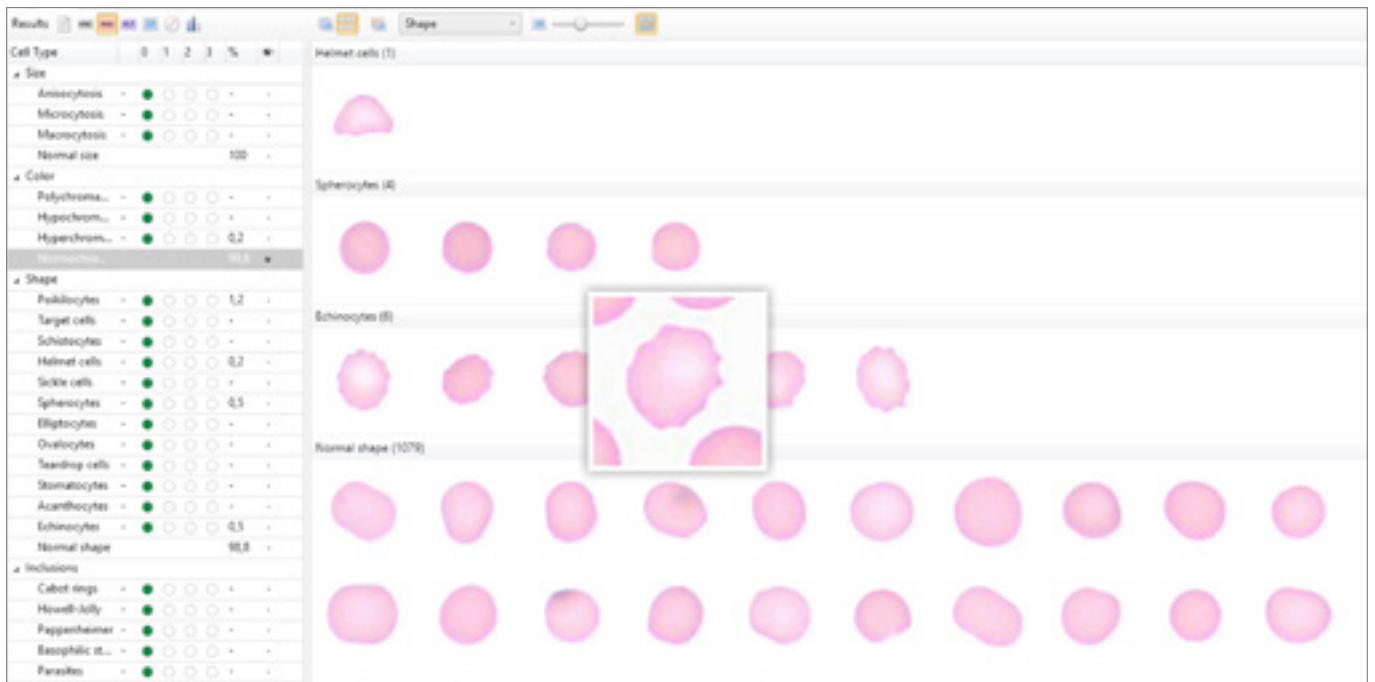


Scanning of blood smear tail

- Additional assessment of atypical forms of leukocytes
- Assessment of platelet aggregations

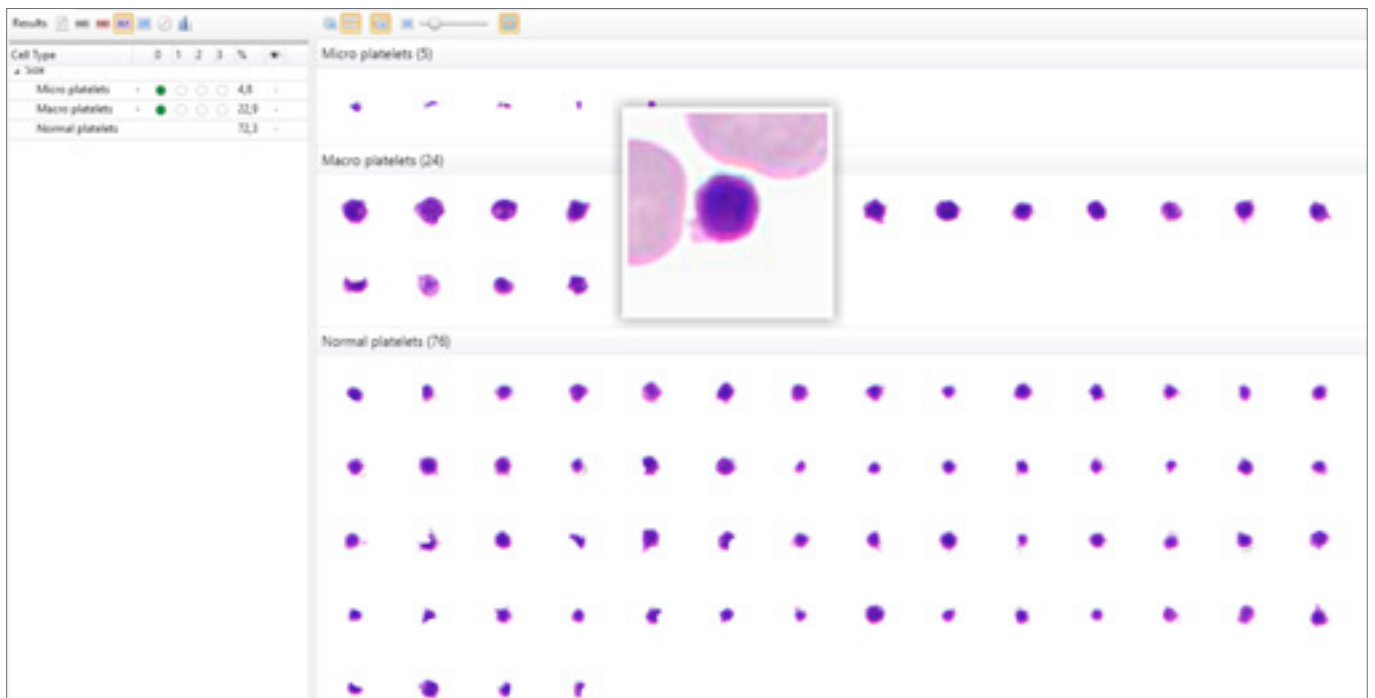
Additional modules

Vision Extended RBC



Automatic identification of erythrocytes by size, color, forms and inclusions. Pre-classification of erythrocytes by 21 parameters. Detailed information of every erythrocyte.

Vision Extended PLT



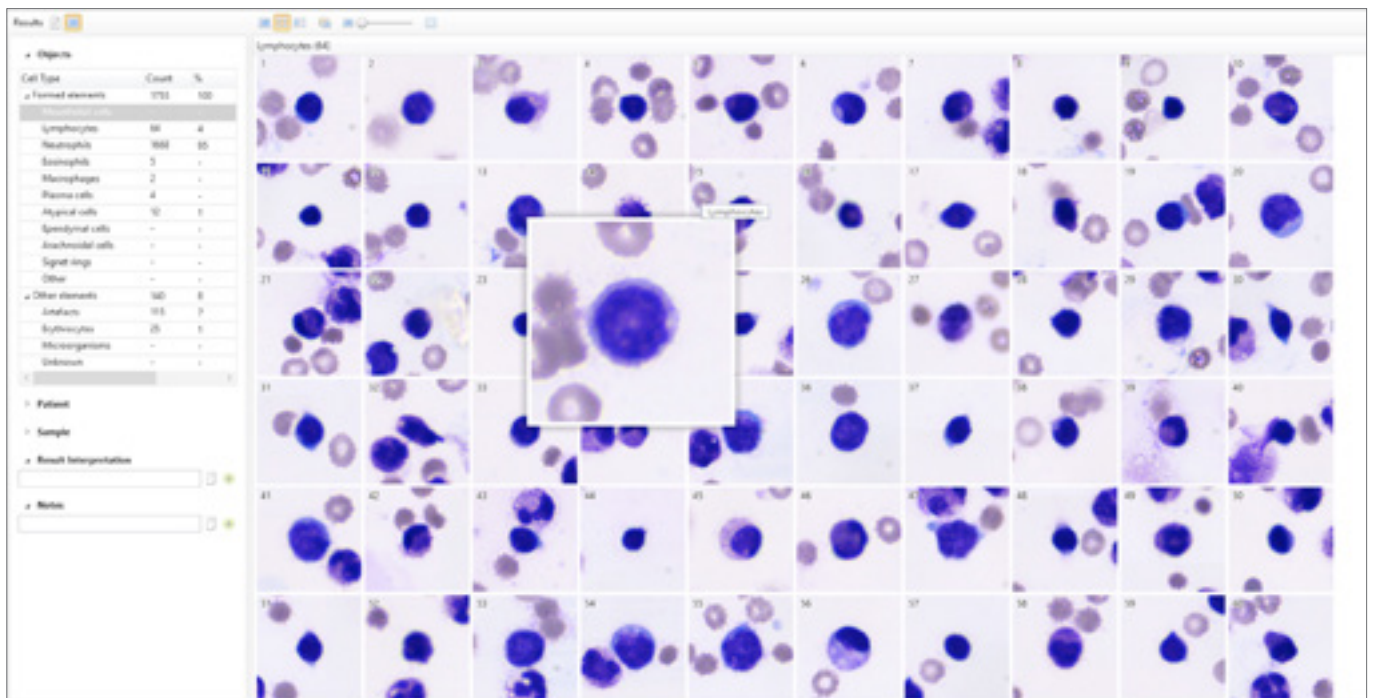
Automatic identification and pre-classification of platelets by 3 parameters: micro, macro, normal. Detailed information of every platelet.

Vision RET



Automatic identification and pre-classification of reticulocytes by classes.

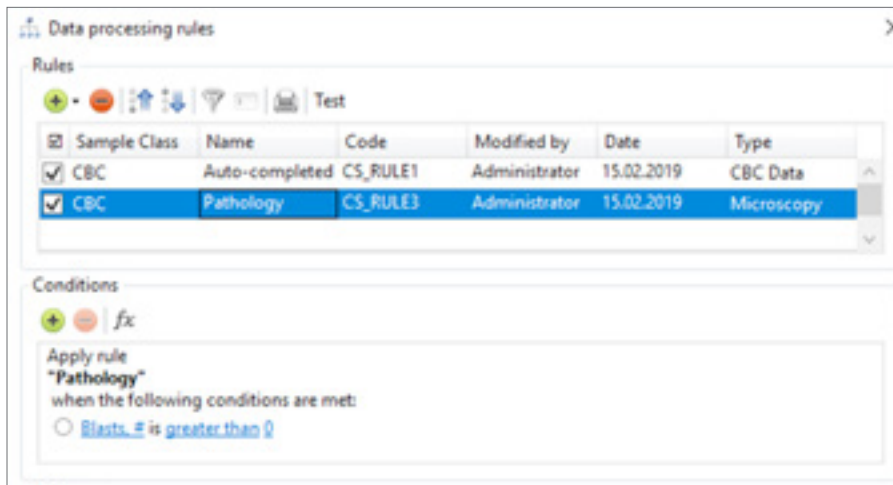
Vision Body Fluids



Automatic identification and pre-classification of cells in human body fluids.

Administrative Modules

Vision Manager



Analysis procedure automation, data processing rules.

Vision Remote



Remote workstation.

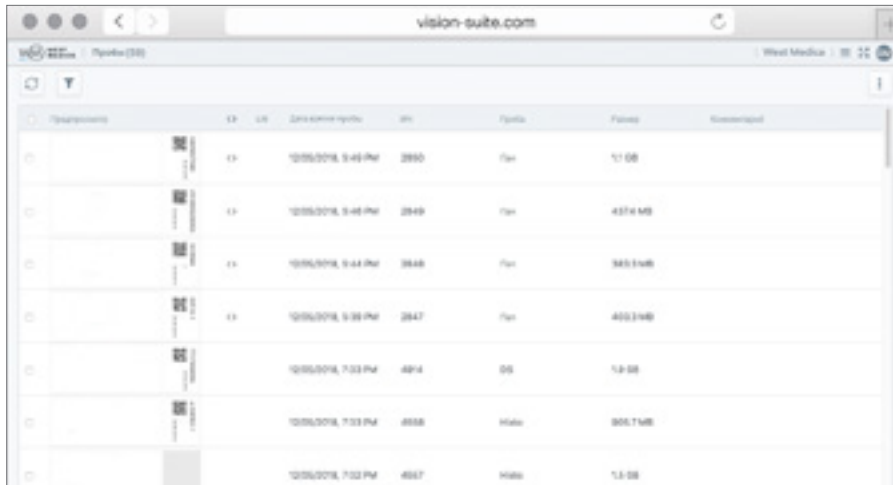
Artificial intelligence



Artificial intelligence (AI) cumulates algorithms and technologies that allow computers to learn and solve intellectual tasks provided by humans.

AI speeds up processing and interpretation of data, and allows to efficiently perform the most comprehensive tasks, including medical image analysis.

Consulting and Education Modules Vision Suite



Examination	EX	LN	Date and time (yyyy-mm-dd)	SN	Port	Pages	Resolution
	EX	LN	10/26/2016, 9:44 PM	2850	7m	17.08	
	EX	LN	10/26/2016, 9:48 PM	2849	7m	4374 MB	
	EX	LN	10/26/2016, 9:44 PM	2848	7m	383.9 MB	
	EX	LN	10/26/2016, 9:38 PM	2847	7m	403.9 MB	
			10/26/2016, 7:33 PM	4814	05	1.8 MB	
			10/26/2016, 7:33 PM	4815	High	305.7 MB	
			10/26/2016, 7:32 PM	4817	High	1.8 MB	

Cloud/server for telemedicine and remote consultations with colleagues.

Vision Expertise



Online testing and quality control.
www.vision-expertise.com

Clinical applications



The latest developments of artificial intelligence provide a solution for the tasks connected with automation in digital microscopy.

Our technologies speed up the diagnostic process, reduce analysis time and lower subjectivity of the results received.

They improve the efficiency of laboratory routine operation, bringing microscopy analyses in line with state-of-the-art standards.

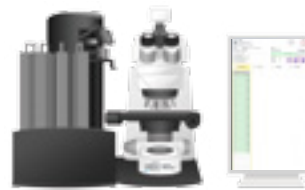
Specifications



**Vision Assist
Cell Imaging Analyzer**



**Vision Pro
Cell Imaging Analyzer**



**Vision Ultimate
Cell Imaging Analyzer**

Application module: Vision Hema	Application module: Vision Hema	Application module: Vision Hema
Additional modules: Vision Extended RBC Vision Extended PLT Vision RET Vision Body Fluids Vision Malaria	Additional modules: Vision Extended RBC Vision Extended PLT Vision RET Vision Body Fluids Vision Malaria	Additional modules: Vision Extended RBC Vision Extended PLT Vision RET Vision Body Fluids Vision Malaria
Working modes: queue (only 4 slides version)	Working modes: queue, random access	Working modes: queue, continuous and random access, STAT testing, 24/7
Automatic scanning 1 or 4 slides	Automatic scanning 4 or 8 slides	Automatic scanning Up to 200 slides
Manual slide handling	2 cassettes with slides	Automatic slide handling
Microscope for scanning	Microscope for scanning	Microscope for scanning
Personal computer	Personal computer	Personal computer
Monitor	Monitor	Monitor
—	—	Touch-screen monitor for control
—	Built-in barcode reader (optional)	Built-in barcode reader
—	Automatic oil dispenser (optional)	Automatic oil dispenser
Optical system: 10x, 50x Oil, 100x Oil	Optical system: 10x, 60x Oil, 100x Oil	Optical system: 10x, 50x Oil, 100x Oil
Bright field	Bright field	Bright field
Köhler illumination, LED	Köhler illumination, LED	Köhler illumination, LED
Bidirectional LIS, LIS2-A2 (ASTM), HL7, Ethernet	Bidirectional LIS, LIS2-A2 (ASTM), HL7, Ethernet	Bidirectional LIS, LIS2-A2 (ASTM), HL7, Ethernet
Art. N.: 71150.01 (1 slide) Art. N.: 71450.01 (4 slides)	Art. N.: 72452.01 (4 slides) Art. N.: 72852.01 (8 slides)	Art. N.: 73011.01 (200 slides)

We reserve the right to change specification without notice.



Manufacturer:
West Medica Produktions- und Handels-GmbH
Brown-Boveri-Straße 6, B17-1, 2351 Wiener Neudorf, Austria
tel.: +43 (0) 2236 892465, fax: +43 (0) 2236 892464
vienna@westmedica.com, www.westmedica.com

For distributor